

State of Wyoming Corner Record

(In compliance with the CORNER PERPETUATION AND FILING ACT, Wyoming Statutes, 1977, Section 36-11-101, et. seq., and the Rules and Regulations of the Board of Registration for Professional Engineers and Professional Land Surveyors)

Reverse side of this form may be used if more space is needed.

Record of original survey and citation of source of historical information (if corner is lost or obliterated). Description of corner monumentation evidence found and/or monument and accessories established to perpetuate the location of this corner. Sketch of relative location of monument, accessories, and reference points with course and distance to adjacent corner(s) (if determined in this survey). Method and rationale for reestablishment of lost or obliterated corner.

G.L.O. Notes: U.S. Deputy Surveyor, Edwin James, June 19, 1871; 80.00 Chains... Set a red sand stone 18 x 8 x 6 for the corner to Sections 25, 26, 35, & 36.

Found and Reset: A loosely set and leaning over 19" x 10" x 3" red colored sandstone marked with one groove on the south and one groove on the east edges, 0.85 feet west of a fence corner post of fences extending North, South and East.

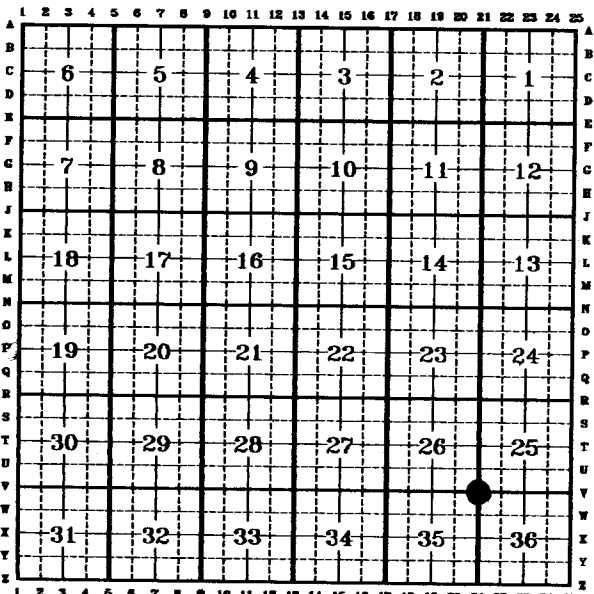
Set: A p.k nail reference in the south face of a wood power pole 4.8 feet west of the corner. A p.k nail in the north face of a wood fence post 17.0 feet east. A p.k nail in the east face of a wood fence post 14.8 feet north.

See back of this sheet for ties to adjacent monuments.

200699
LARAMIE COUNTY CLERK
CHEYENNE, WY.
97 APR 7 PM 4 39

Date of Field Work: 2, March, 1994 Office Reference: EXXON Looseleaf Pg. 56A

CROSS INDEX DIAGRAM

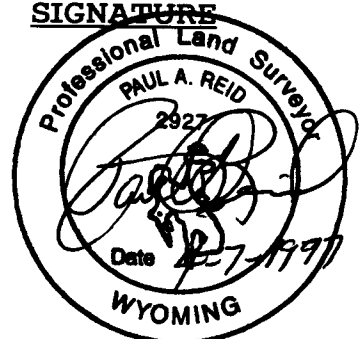


Firm/Agency, Address

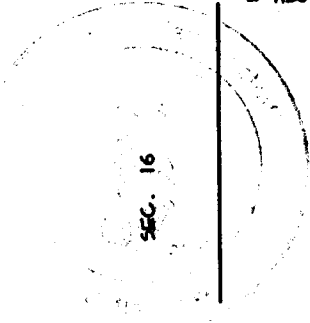
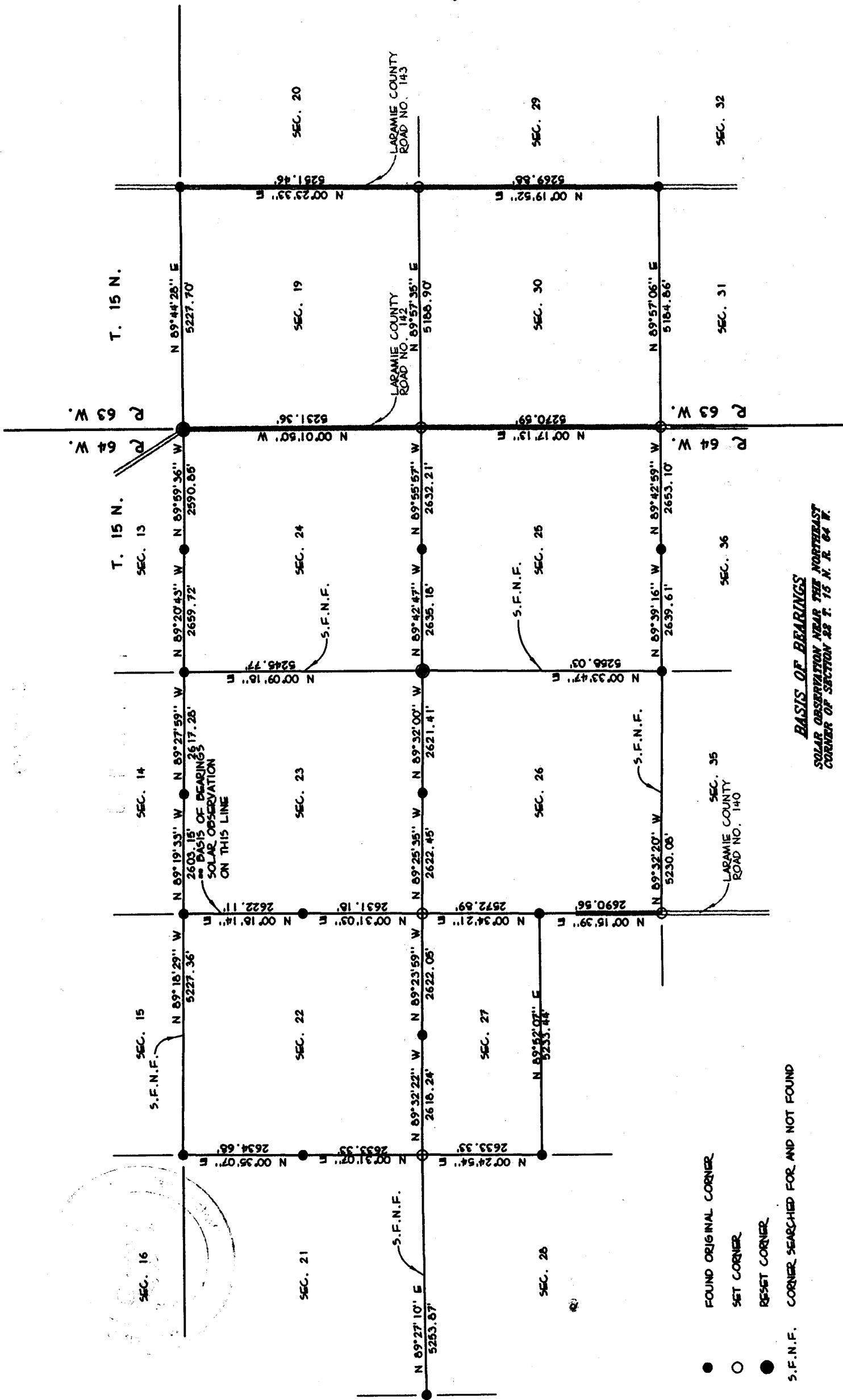
Paul A. Reid, A.V.I.p.c.
2035 Westland Road
Cheyenne, WY 82001

Telephone Number:
(307)-634-6017

This corner record was prepared by me or under my direction and supervision.
SEAL & SIGNATURE



Corner Name: SE Corner Section: 26 T 15N R 64W; 6TH P.M. Cross-Index No.: V-21



BASIS OF BEARINGS
SOLAR OBSERVATION NEAR THE NORTHEAST CORNER OF SECTION 13 T. 15 N. R. 64 W.

- FOUND ORIGINAL CORNER
- SET CORNER
- RESET CORNER
- S.F.N.F. CORNER SEARCHED FOR AND NOT FOUND